

(Select Tower)

Tower A | Tower B | Tower C | Tower D | Tower E | Tower F | Tower G

Tower H | Tower I | Tower J | Tower K | Tower L | Tower M | Tower N



TOWER A : Level 4 Roof , Clubhouse Slab Reinforcement and Shuttering works in Progress.



TOWER B : Level 11 Roof Shuttering and Reinforcement Works in Progress





TOWER C : Level 16 Roof completed





TOWER D : Terrace work and Toilet Bore Packing Works in Progress



TOWER E : Level 16 Terrace work and Level 10 Toilet Bore Packing Works in Progress





TOWER F : LMR Bottom Slab Completed and Toilet Water Proofing in Level 14 Works in Progress.



TOWER G : Level 8 Roof Reinforcement and Shuttering Works in Progress



TOWER H : Upper Basement Column Casting Works in Progress.



TOWER J : Upper Basement Column Casting , Slab Shuttering & Reinforcement Works in Progress .



TOWER K : Level 9 Roof Shuttering & Reinforcement Works in Progress.



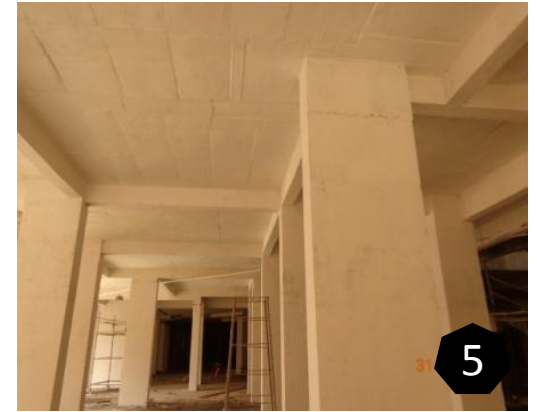
TOWER L, M & N : Lower Basement Column Casting Works in Progress





PODIUM:

1. Podium south side slab retaining wall & footing in progress.
2. Tower J & K podium area slab shuttering, reinforcement & concrete in progress.
3. Tower F podium area slab shuttering , reinforcement & concrete in progress.
4. Tower E south side near expansion joint area grade slab concrete completed.
5. Tower G painting in progress at lower basement level south side.
6. Tower A grinding in progress at upper basement level

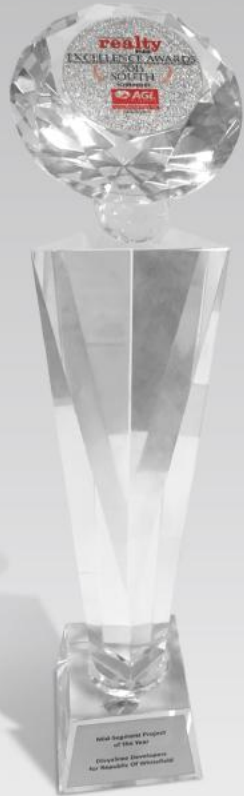


Thanks

Team CRM

Contact : crm@row.co.in , 1800 419 3366





STANDING TALL AMONGST THE REST.

Republic of Whitefield grows in stature.

7th REALTY PLUS EXCELLENCE AWARDS (SOUTH) 2015
MID-SEGMENT PROJECT OF THE YEAR